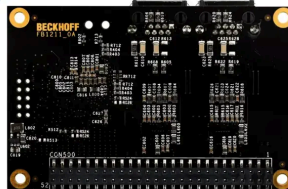


## Beckhoff - FB Piggyback Controller Series

### FB1111-0142



**AUTOMATION  
FACTORY**



 **Request a Quote**

- Get a Quote in 5 minutes
- Parts ship in as little as 24 hours
- Up to half the cost of the manufacturer



Secure Online  
Checkout



Free Ground Shipping



One Year Warranty

The **FB1111-0142** is a part of the **FB Piggyback Controller Series** by **Beckhoff**.

### Specifications

|                            |   |                               |                                   |                             |   |
|----------------------------|---|-------------------------------|-----------------------------------|-----------------------------|---|
| <b>Board Type:</b>         | EtherCAT piggyback controller board                             | <b>Asic Used:</b>             | ET1100 EtherCAT ASIC              | <b>Interface Type:</b>      | Digital I/O interface   |
| <b>Included Kit:</b>       | EL9820 evaluation kit   | <b>Product Form Factor:</b>   | Same across all FB1111 variants   | <b>Integration Use:</b>     | Can be used with EtherCAT evaluation kit  |
| <b>Ethercat Interface:</b> | Can be integrated as an EtherCAT interface in devices           | <b>Manufacturing Company:</b> | Beckhoff Automation GmbH & Co. KG | <b>Product Image Url:</b>   | <a href="https://multimedia.beckhoff.com/media/fb1111__web_main_previe">https://multimedia.beckhoff.com/media/fb1111__web_main_previe</a> |
| <b>Locale Options:</b>     | Supports multiple languages including EN-US, DE-DE, FR-FR, etc. | <b>Ordering Code:</b>         | FB1111-0142                       | <b>Ethernet Connection:</b> | Complete EtherCAT connection  |

### Contact Us

Available for  
 1620 Old Apple Road, Cary, NC 27513, USA  
 Documentation on product [sales@beckhoff.com](mailto:sales@beckhoff.com)  
 Contact For Support:  
 Availability: 1-888-551-3062  
 Toll Free: 1-888-551-3062  
 Last Verified: 6:56 AM  
 International: [1-919-443-0207](tel:1-919-443-0207)

Fax: [1-919-867-6204](tel:1-919-867-6204)

Email: [sales@automation-factory.com](mailto:sales@automation-factory.com)

### Shipping Options



### Payment Methods



Automation Factory sells factory new and pre-owned surplus products and maintains channels to procure supply. Automation Factory is not affiliated with nor an authorized distributor or representative of any manufacturers, brands or products listed. Designated trademarks, brand names, and brands appearing herein are the property of their respective owners.